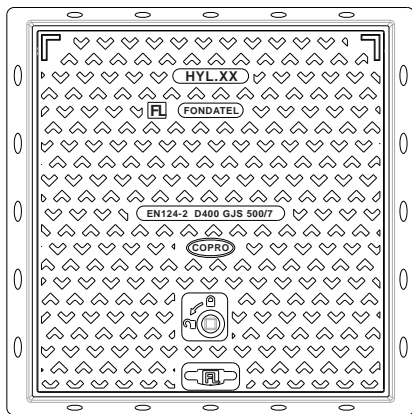
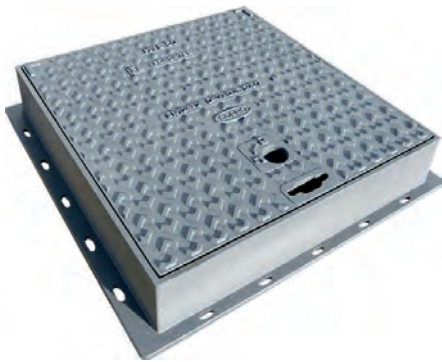


# HYL Hydraulic covers D400

EN124-2 by | medium traffic | square frame | **OPTION**



### DESCRIPTION

D400 lockable hydraulic cover with square frame, medium traffic

### ADVANTAGE PRODUCT

- 100 mm high frame with single continuous sealing groove, avoiding smell.
- Unique form of cover so that there is only way to put cover into frame, to avoid noise.
- Cover incorporates sealing (O-ring) for stability to minimise noise
- Antiskid design for low noise nuisance

### Implementation and use

- Solid frame with a minimum of holes in order to maximize weight spread
- High frame, with external reinforcement ribs in order to facilitate finishing with f.e. cobblestones
- None hinged cover, which can be put at 110° in frame
- Sealed keyhole

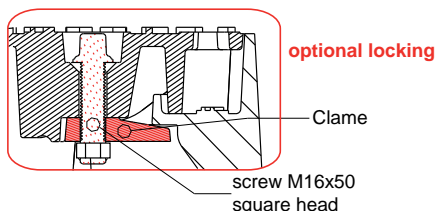
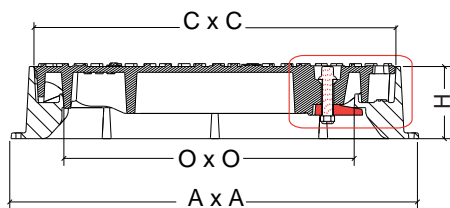
### MATERIAL

Ductile iron GJS 500-7 depending on EN1563

### PLACE OF INSTALLATION

Group 4, class D400 → see EN124-1

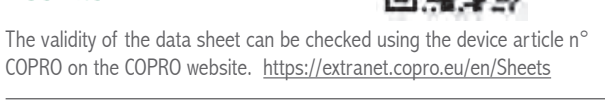
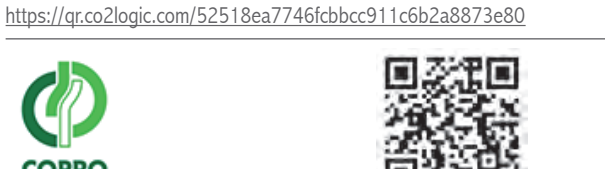
Carriageways of roads (including pedestrian streets) with moderate traffic, car parks with occasional passage of trucks at limited speed



REFERENCE	ARTICLE N°	ARTICLE N° COPRO	DIMENSIONS				KG	PACK
			AXA	OXO	CXC	H		
HYL 40	845440	0452/0237	465x465	300x300	380X400	100	37	10/20
HYL 50	845450	0452/0279	565x565	400x400	480X500	100	53	10/20
HYL 60	845460	0452/0236	665x665	500x500	580X600	100	68	5/10
HYL 70	845470	0452/0269	765x765	597x597	677x697	100	85	5

Sizes in mm - Weights, sizes and sketch are indicative - Uncontrolled distribution.

# HYL Hydraulic covers D400



The validity of the data sheet can be checked using the device article n° COPRO on the COPRO website. <https://extranet.copro.eu/en/Sheets>

**OPTION**  
•Lifting key  
•article n° : 200100

**VARIANTS**

EN124-2 by

medium traffic

square frame

**OPTION**



**ENVIRONMENT**

**0 kg CO<sub>2</sub>/product through compensation (\*)**

(\*) Following our balance sheet of carbon dioxide emissions, Fondatel made an action plan to reduce its carbon dioxide emissions with 20% latest 2025 following European regulations.

In order to compensate actual balance of emissions which can't yet be avoided, Fondatel engaged itself to invest into certified climate projects, which themselves help to lower global carbon emissions and present multiple gains described in the list of Objectives of Sustainable Development by United Nations.

Compensation is

HYL 40	76,96 kg CO <sub>2</sub> /product
HYL 50	110,24 kg CO <sub>2</sub> /product
HYL 60	141,44 kg CO <sub>2</sub> /product
HYL 70	176,80 kg CO <sub>2</sub> /product

**CERTIFICATION THIRD PARTY**

COPRO

**OPTIONS**

- Locking
- Lifting key

**VARIANTS**

- Also available in class B125→HY
- Also available in class C250→HYC

Sizes in mm - Weights, sizes and sketch are indicative - Uncontrolled distribution.