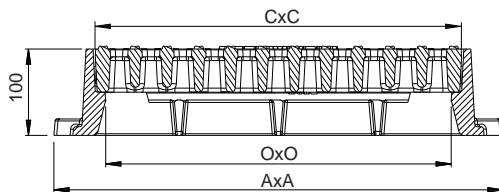
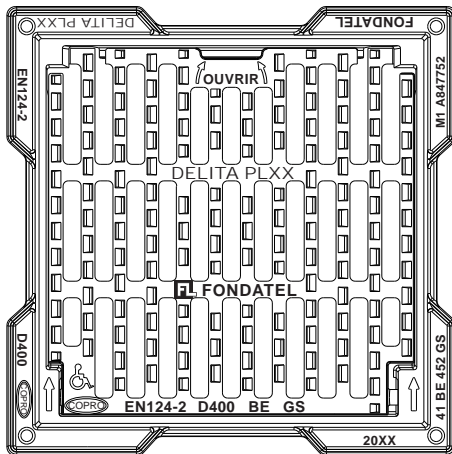


# DELITA PL

## Flat grating D400



EN124-2 by	heavy traffic		square frame	hinged	locked with springs bars	<b>OPTION</b> anti-theft

### DESCRIPTION

Hinged and flat grating D400 heavy traffic, locking included.

### ADVANTAGE PRODUCT

#### Efficient articulation

- Opening of 110° for easy access

#### Silence and stability

- Locked with springs bars
- Antiskid design for low noise nuisance
- To ensure that public places are accessible to disabled people, the slots in the gratings are never larger than 20 mm. This is also a safety feature for bicycles and pedestrians.

#### Implementation and use

- Flanges at 4 sides in order to have a large surface to facilitate correct placement
- 4 holes on the base of frame for a possible pegging.
- Locking by elastic bar by simple pressure on the grating or vehicle passage
- Release through leverage by any traditional tools.
- High straight frame, without external reinforcement ribs to enable all kinds of finishing (for example pavements)

### MATERIAL

Ductile iron GJS 500-7 depending on EN1563

### PLACE OF INSTALLATION

Group 4, class D400 → see EN124-1

Carriageways of roads (including pedestrian streets), hard shoulders and parking areas, for all types of road vehicles

REFERENCE	ARTICLE N°	ARTICLE N° COPRO	DIMENSIONS			KG	WATER WAY AREA	PACK.
			AXA	OxO	CxC			
Delita PL 40	847740	0452/0256	420x420	300x300	325x325	31	3,5 dm <sup>2</sup>	10
Delita PL 50	847750	0452/0241	520x520	400x400	425x425	39	6,1 dm <sup>2</sup>	10
Delita PL 60	847760	0452/0242	620x620	500x500	525x525	51	12,1 dm <sup>2</sup>	10
Delita PL 70	847770	0452/0243	720x720	600x600	624x624	85	14,5 dm <sup>2</sup>	5
Delita PL 80	847780	0452/0244	820x820	700x700	723x723	110	21,1 dm <sup>2</sup>	5

Sizes in mm - Weights, sizes and sketch are indicative - Uncontrolled distribution.

# DELITA PL

## Flat grating D400

EN124-2 by



heavy traffic



square frame



hinged



locked with springs bars



**OPTION**  
anti-theft

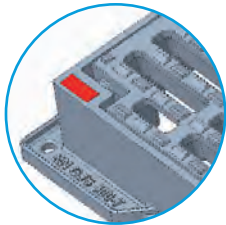
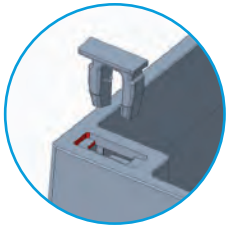


<https://fondatel.com/index.php/environmental-policy-2/?lang=en>  
<https://qr.co2logic.com/52518ea7746fcbcc911c6b2a8873e80>



The validity of the data sheet can be checked using the device article n° COPRO on the COPRO website. <https://extranet.copro.eu/en/Sheets>

**OPTION**  
anti-theft



**VARIANT**

Concave grating version: DELITA CO



### ENVIRONMENT

#### 0 kg CO<sub>2</sub>/product through compensation (\*)

(\*) Following our balance sheet of carbon dioxide emissions, Fondatel made an action plan to reduce its carbon dioxide emissions with 20% latest 2025 following European regulations.

In order to compensate actual balance of emissions which can't yet be avoided, Fondatel engaged itself to invest into certified climate projects, which themselves help to lower global carbon emissions and present multiple gains described in the list of Objectives of Sustainable Development by United Nations.

Compensation is

Delita PL 40	64,48 kg CO <sub>2</sub> /product
Delita PL 50	81,12 kg CO <sub>2</sub> /product
Delita PL 60	106,08 kg CO <sub>2</sub> /product
Delita PL 70	176,80 kg CO <sub>2</sub> /product
Delita PL 80	228,80 kg CO <sub>2</sub> /product

### CERTIFICATION THIRD PARTY

COPRO

**OPTION**  
anti-theft

**VARIANT**

Concave grating version: DELITA CO

Sizes in mm - Weights, sizes and sketch are indicative - Uncontrolled distribution.