

# DELITA CO

## Concave grating D400

EN124-2 by



EN124-2 by



heavy traffic



square frame



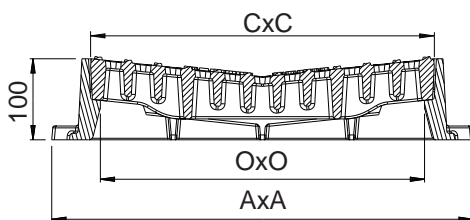
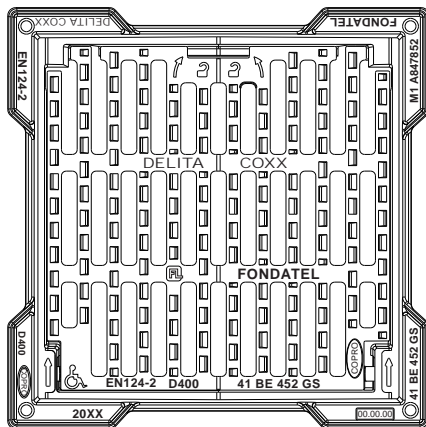
hinged



locked with springs bars



**OPTION**  
anti-theft



### DESCRIPTION

Hinged and concave grating D400 heavy traffic, locking included.

### ADVANTAGE PRODUCT

#### Efficient articulation

- Opening of 110° for easy access

#### Silence and stability

- Locked with springs bars
- Antiskid design for low noise nuisance
- To ensure that public places are accessible to disabled people, the slots in the gratings are never larger than 20 mm. This is also a safety feature for bicycles and pedestrians.

#### Implementation and use

- Flanges at 4 sides in order to have a large surface to facilitate correct placement
- 4 holes on the base of frame for a possible pegging.
- Locking by elastic bar by simple pressure on the grating or vehicle passage
- Release through leverage by any traditional tools.
- High straight frame, without external reinforcement ribs to enable all kinds of finishing (for example pavements)

### MATERIAL

Ductile iron GJS 500-7 depending on EN1563

### PLACE OF INSTALLATION

Group 3 → see EN124-1

For gully tops installed in the area of kerbside channels of roads which when measured from the kerb edge extend a maximum of 0,5m into the carriageway

**SPECIFICATION FOR CONCAVE GRATINGS D400:** «European norm EN124-2 doesn't apply on concave gratings in class D400 installed on carriageway or kerbside channels of roads and for concave gratings in class E600 and F900»

REFERENCE	ARTICLE N°	ARTICLE N° COPRO	DIMENSIONS			KG	WATER WAY AREA	PACK.
			AXA	OXO	CXC			
Delita CO 40	847840	0452/0257	420x420	300x300	321x321	31	3,71 dm <sup>2</sup>	10
Delita CO 50	847850	0452/0245	520x520	400x400	421x421	47	6,38 dm <sup>2</sup>	10
Delita CO 60	847860	0452/0246	620x620	500x500	524x524	68	10,40 dm <sup>2</sup>	10
Delita CO 70	847870	0452/0247	720x720	600x600	621x621	88	14,96 dm <sup>2</sup>	5
Delita CO 80	847880	0452/0258	820x820	700x700	721x721	105	21,08 dm <sup>2</sup>	5

Sizes in mm - Weights, sizes and sketch are indicative - Uncontrolled distribution.

# DELITA CO

## Concave grating D400

EN124-2 by



EN124-2 by



heavy traffic



square frame



hinged



locked with springs bars



**OPTION**  
anti-theft



<https://fondatel.com/index.php/environmental-policy-2/?lang=en>  
<https://qr.co2logic.com/52518ea7746fcbcc911c6b2a8873e80>



Brand name NF-VOIRIE

This brand certify the referential conformity NF-110 thanks to a permanent control exercised by AFNOR CERTICIATION / 11 francis de pressense street F-93571 LA PLAINE SAINT DENIS CEDEX and accessible on [www.marque-nf.com](http://www.marque-nf.com)

The validity of this data sheet can be checked on the AFNOR website\*



The validity of the data sheet can be checked using the device article n° COPRO on the COPRO website. <https://extranet.copro.eu/en/Sheets>



### ENVIRONMENT

#### 0 kg CO<sub>2</sub>/product through compensation (\*)

(\*) Following our balance sheet of carbon dioxide emissions, Fondatel made an action plan to reduce its carbon dioxide emissions with 20% latest 2025 following European regulations.

In order to compensate actual balance of emissions which can't yet be avoided, Fondatel engaged itself to invest into certified climate projects, which themselves help to lower global carbon emissions and present multiple gains described in the list of Objectives of Sustainable Development by United Nations.

Compensation is

Delita CO 40	64,48 kg CO <sub>2</sub> /product
Delita CO 50	97,76 kg CO <sub>2</sub> /product
Delita CO 60	141,44 kg CO <sub>2</sub> /product
Delita CO 70	183,04 kg CO <sub>2</sub> /product
Delita CO 80	218,40 kg CO <sub>2</sub> /product

### CERTIFICATION THIRD PARTY

- NF-VOIRIE mark
- COPRO

### OPTION

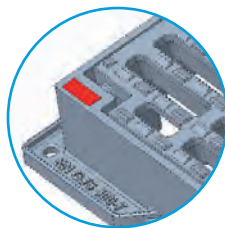
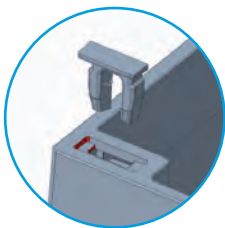
anti-theft

### VARIANT

Flat grating version: Delita PL

### OPTION

anti-theft



### VARIANT

Flat grating version: DELITA PL



\*AFNOR: <https://certificats-attestations.afnor.org/certifie-detail/068061038110180032206091164223152162249092011059>

Sizes in mm - Weights, sizes and sketch are indicative - Uncontrolled distribution.